



## Hard Chess Puzzle # 0123

By

G Bud Games  
<https://gbud.in>

January 31, 2022

## Contents

<b>Hard Chess puzzle # 0123 - Promote your pawn to a queen in 3 moves</b>	<b>4</b>
Hard chess puzzle 0123 . . . . .	4
Solution to hard chess puzzle 0123 . . . . .	5
Solution 1 . . . . .	5
Right moves for the solution to the hard chess puzzle 0123	9
Explanation for the moves . . . . .	9
Categories of hard chess puzzle 0123 . . . . .	9
hard chess puzzle 0123 chart . . . . .	10
How to view the solution to hard chess puzzle 0123 . . . . .	12
How to get help for moves in the hard chess puzzle 0123 . . . . .	13
Play chess for free . . . . .	14

## List of Figures

1	<a href="https://gbud.in/g2rxqj3">Solve this hard chess puzzle 0123. Promote your pawn to a queen in 3 moves @ https://gbud.in/g2rxqj3</a> . . . . .	4
2	<a href="https://gbud.in/g2rxqj3">Solve this hard chess puzzle online with solution @ https://gbud.in/g2rxqj3</a> . . . . .	4
3	Initial board position of hard chess puzzle 0123 . . . . .	5
4	Rxh4 . . . . .	6
5	Qg4+ . . . . .	6
6	Rxg4 . . . . .	7
7	Bxg4+ . . . . .	7
8	Kf1 . . . . .	8
9	h1=Q+ . . . . .	8
10	<a href="#">hard chess puzzle 123 chart 1</a> . . . . .	10
11	<a href="#">hard chess puzzle 123 chart 2</a> . . . . .	11
12	<a href="#">hard chess puzzle 123 chart 3</a> . . . . .	11
13	<a href="#">hard chess puzzle 123 chart 4</a> . . . . .	12
14	<a href="https://gbud.in/g2rxqj3">Click the solution button to view solutions @ https://gbud.in/g2rxqj3</a> . . . . .	12
15	<a href="https://gbud.in/g2rxqj3">Click the help button to get help on next move @ https://gbud.in/g2rxqj3</a> . . . . .	13
16	<a href="https://gbud.in/chshdpz">Solve more hard puzzles @ https://gbud.in/chshdpz</a> . . . . .	13
17	<a href="https://gbud.in/chsgppz">Solve other puzzles @ https://gbud.in/chsgppz</a> . . . . .	13
18	<a href="#">Play chess online for free. Solve puzzles and play with friends</a> 14	14

19 Solve this puzzle online by scanning this QR code or go to  
the link below . . . . . 15

## Hard Chess puzzle # 0123 - Promote your pawn to a queen in 3 moves

Solve this hard chess puzzle and improve your chess games through improvement of your chess strategies and chess tactics. This hard puzzle is a subset of [kids games](#).

Puzzle No : 0123

Difficulty level : hard

Description : Promote your pawn to a queen in 3 moves

Next Move : Black

Player level : Advanced

Short URL for puzzle : <https://gbud.in/g2rxqj3>

### Hard chess puzzle 0123

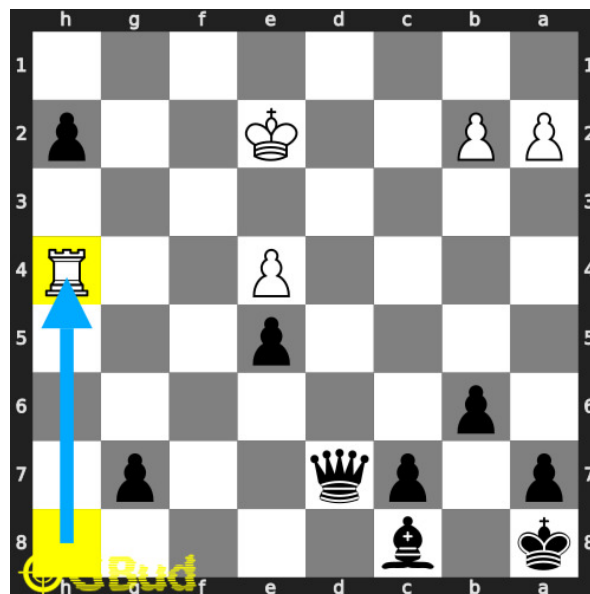


Figure 1: Solve this hard chess puzzle 0123. Promote your pawn to a queen in 3 moves @ <https://gbud.in/g2rxqj3>



Figure 2: Solve this hard chess puzzle online with solution @ <https://gbud.in/g2rxqj3>

Dont forget to check out [chess puzzles](#), [easy chess puzzles](#), [medium chess puzzles](#), [hard chess puzzles](#) and [chess puzzles collections](#) .

## Solution to hard chess puzzle 0123

At this puzzle, next [move](#) is by [Black](#). The objective of the puzzle is to promote your pawn to a queen in 3 moves.

See the interactive solution at the [puzzle page](#)

### Solution 1

**Initial board position** This is the initial board position of hard chess puzzle 0123.

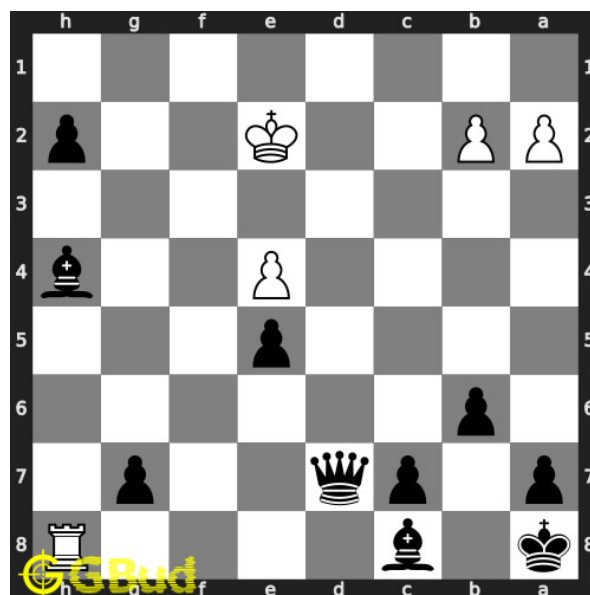


Figure 3: Initial board position of hard chess puzzle 0123

**Move 1** Move by white

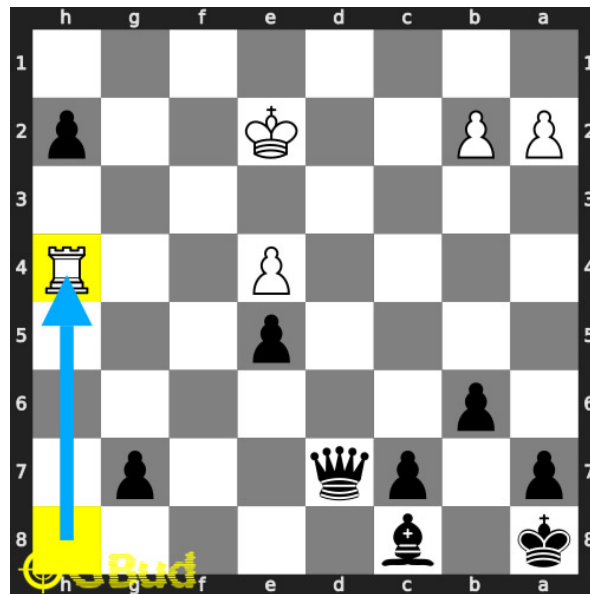


Figure 4: Rxh4

opponent targets your **pawn** after capturing the **bishop**. you need to re-move this **rook** to promote your **pawn**.

**Move 2** Move by black

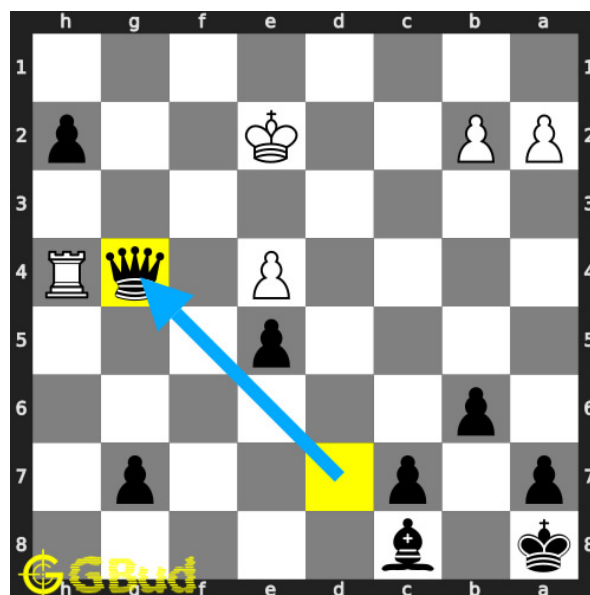


Figure 5: Qg4+

your **queen** from the **battery** formation **sacrifices** itself by having a **fork** on opponent's **rook** and **king**.

### Move 3 Move by white

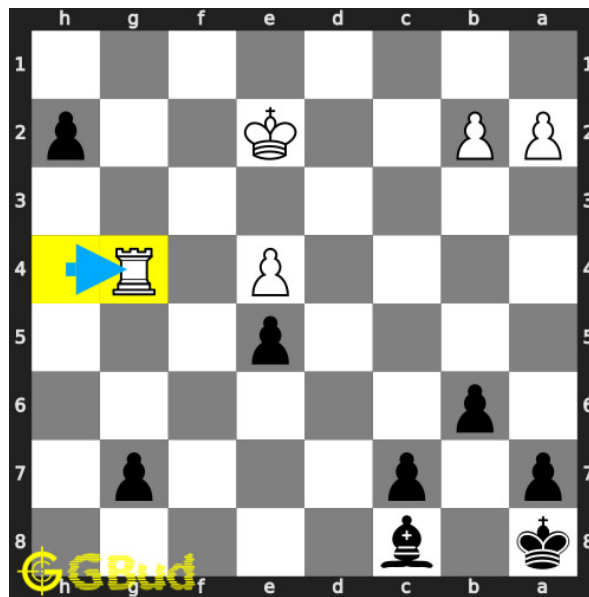


Figure 6: Rxg4

this is a desperado [move](#) since the opponent wants to make a maximum loss to you before losing their [rook](#). this is also a zugzwang [move](#) since the opponent's [rook](#) is forced to respond.

### Move 4 Move by black

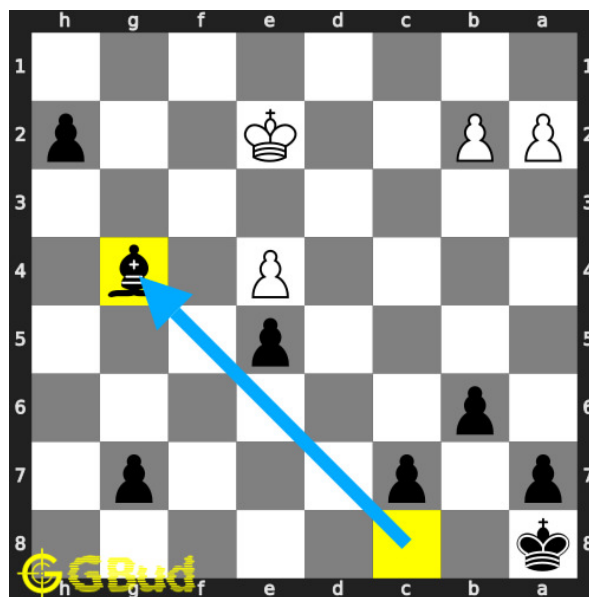


Figure 7: Bxg4+

your [bishop captures](#) opponent's [rook](#) and gives a [check](#).

**Move 5** Move by white

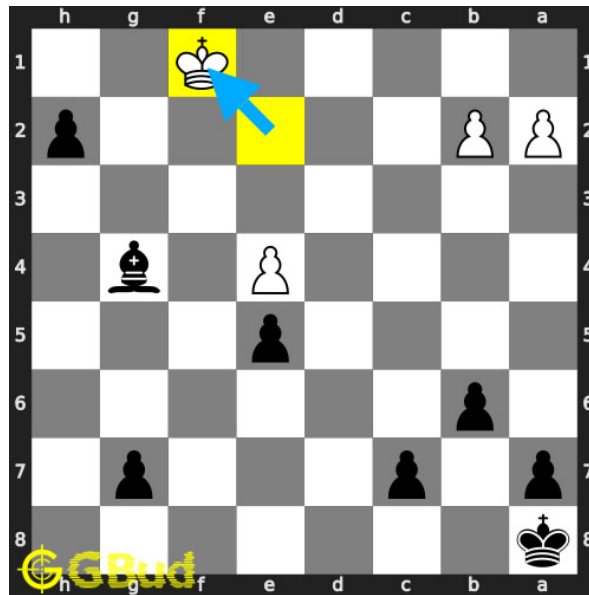


Figure 8: Kf1

opponent's king escapes from the check threat by moving to f1.

**Move 6** Move by black

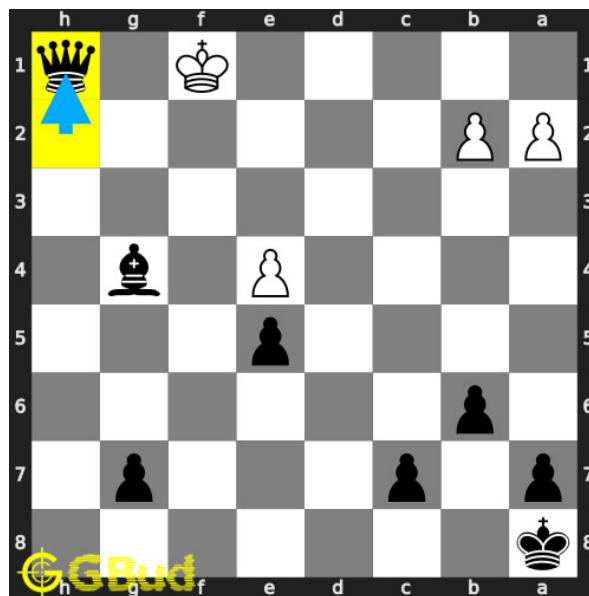


Figure 9: h1=Q+

your pawn is promoted to a queen. you made the opponent to lose their rook. this is a gain for you. this is how you can promote your pawn to a queen in 3 moves.



## Right moves for the solution to the hard chess puzzle 0123

Based on the objective of the puzzle, you have to make the right moves. Following are the right moves

1. Qg4+, Bxg4+, h1=Q+

### Explanation for the moves

1. Rxh4 - Opponent targets your pawn after capturing the bishop. You need to remove this rook to promote your pawn.
2. Qg4+ - Your queen from the battery formation sacrifices itself by having a fork on opponent's rook and king.
3. Rxg4 - This is a desparado move since the opponent wants to make a maximum loss to you before losing their rook. This is also a zugzwang move since the opponent's rook is forced to respond.
4. Bxg4+ - Your bishop captures opponent's rook and gives a check.
5. Kf1 - Opponent's king escapes from the check threat by moving to f1.
6. h1=Q+ - your pawn is promoted to a queen. You made the opponent to lose their rook. This is a gain for you. This is how you can promote your pawn to a queen in 3 moves.
7. For right move - You sacrificed your queen wisely to get another queen in three moves. Your moves were fantastic
8. For wrong move - You should have sacrificed the queen for the promotion. Try again

## Categories of hard chess puzzle 0123

This hard chess puzzle falls in these categories.

1. [Hard chess puzzles](#)
2. [Sacrifice puzzles in chess](#)
3. [Gain puzzles in chess](#)
4. [Fork puzzles in chess](#)
5. [Promotion puzzles in chess](#)
6. [Battery puzzles in chess](#)
7. [Strategy puzzles in chess](#)
8. [Zugzwang puzzles in chess](#)
9. [Pawn puzzles in chess](#)
10. [Queen puzzles in chess](#)
11. [Bishop puzzles in chess](#)

## hard chess puzzle 0123 chart



Figure 10: hard chess puzzle 123 chart 1



Figure 11: hard chess puzzle 123 chart 2



Figure 12: hard chess puzzle 123 chart 3



Figure 13: hard chess puzzle 123 chart 4

## How to view the solution to hard chess puzzle 0123

To view the [solution to this puzzle](#), follow the steps given below

1. Go to the [puzzle page](#)
2. Click the solution button (Key as shown [below](#)) to view the solution



Figure 14: Click the solution button to view solutions @ <https://gbud.in/g2rxqj3>

## How to get help for moves in the hard chess puzzle 0123

To get help or the possible next moves in the puzzle, , follow the steps given below

1. Go to the [puzzle page](#)
2. Click the help button (exclamation mark as shown [below](#)) to get help or suggestion on next possible [move](#)



Figure 15: Click the help button to get help on next move @ <https://gbud.in/g2rxqj3>



Figure 16: Solve more hard puzzles @ <https://gbud.in/chshdpz>



Figure 17: Solve other puzzles @ <https://gbud.in/chsgppz>

## Play chess for free

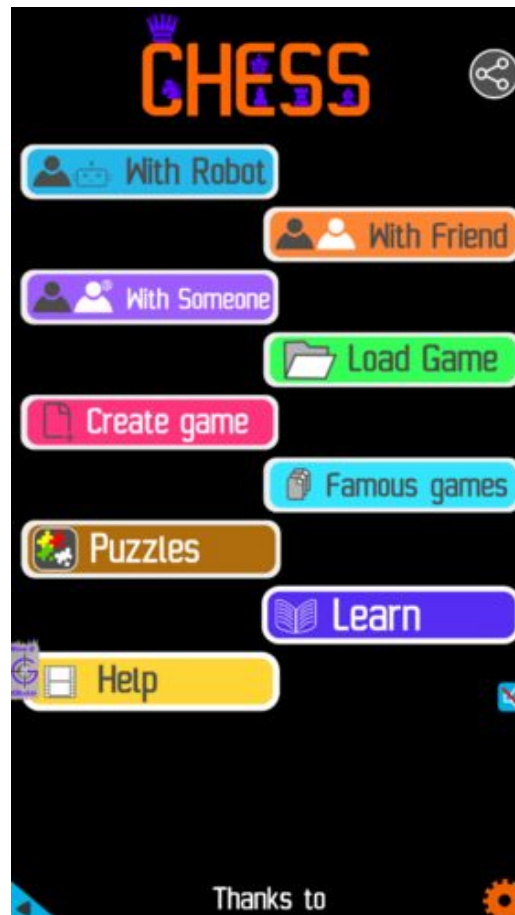


Figure 18: Play chess online for free. Solve puzzles and play with friends

Play chess for free at <https://gbud.in/chs>

We present you a platform to play chess online with friends for free. No need to install any app. You can play chess for free without registration or login.

Simple. You can do several chess related activities.

1. [solve chess puzzles](#)
2. [learn about chess](#)
3. [play chess with computer](#)
4. [play chess with friend](#)
5. [create your own chess games](#)

6. [fen viewer](#)
7. [fen editor](#)
8. [fen generator](#)
9. [pgn viewer](#)
10. [chess board editor](#)
11. [view famous chess games.](#)



Figure 19: Solve this puzzle online by scanning this QR code or go to the link below

<https://gbud.in/g2rxqj3>

Read the latest article on Hard Chess puzzle # 0123 - Promote your pawn to a queen in 3 moves by scanning this QR code or click the link

Previous article : « [Hard Chess puzzle # 0122 - Mate in 3 moves](#)

Next article : [Hard chess puzzles](#) »

[Back to top](#)

[Contact Us](#)